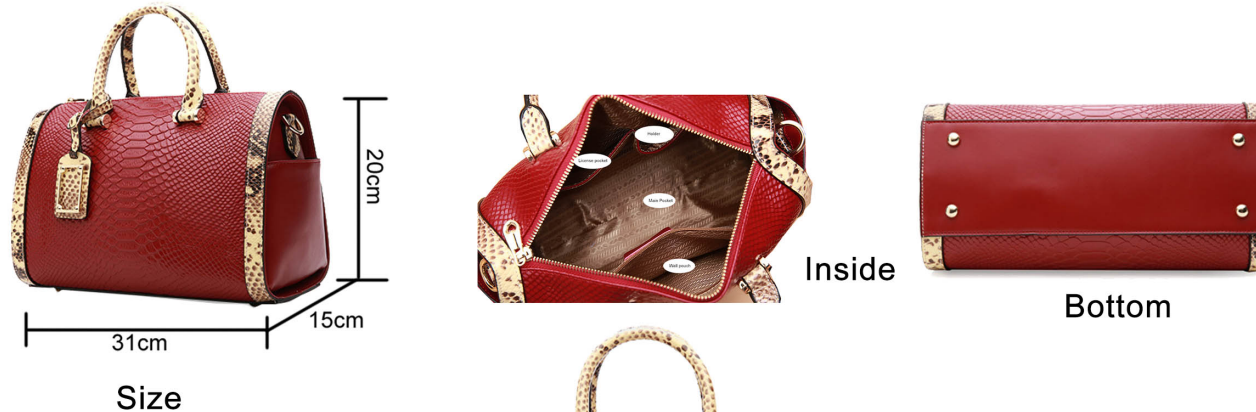


Satchel

NL1195



Different views for details



Front

More colors for option



White



Black

Description

Head off to work with your personal and professional essentials stashed neatly inside this snake embossed satchel. It is crafted from snake embossed patent cowhide leather and features a medium sized shape and a structured design with tortoise resin and chain link accents on the top handles and a adjustable strap that can be carried over the shoulder or slung across the body. The zip top main compartment is fully lined and roomy with a front wall zip pocket and two holders to store your daily essentials .

Product Specifications

SKU: NL1195

Exterior Dimensions: 20 x 31 x 15 CM
(7.9" x 12.2" x 5.9")

Color : Red/Black/White

Strap: Adjustable and Metal chain

Zipper: Well plated and anti-rust

Weight: 0.68kg (1lb , 8.0 oz)

Material: Cowhide Leather

Warranty: 1 Year against manufacturer defects